

NEWMAR | 2018 VENTANA DIESEL MOTOR COACH



# VENTANA

50 YEARS HAS TAUGHT US...  
EXPECTATIONS AREN'T MET, ONLY EXCEEDED.





LEADING THE WAY  
**FORWARD**

At Newmar, our first 50 years have taught us that the brightest futures are realized by those willing to blaze a new trail. Lead rather than follow. And reject cookie-cutter imitation in favor of cutting-edge innovation. That's why we are committed to spending the next half century creating handcrafted motor coaches that go above and beyond their batch-built competition. Coaches designed and engineered to help you live the RV lifestyle to the absolute fullest. Join us, and discover the Newmar difference for yourself.

Matt Miller, President





Full-paint Masterpiece™ Finish | Lagoon Exterior | Floor Plan 4308

## THE COMPLETE PACKAGE

With 14 floor plans available from 34' to 43', and standard features that include soft and durable Ultrafabrics furniture, a Bose® Solo 5 Bluetooth®-compatible soundbar, and all-new porcelain tile flooring with metal and stone inserts, Ventana is what you want, just the way you want it. New for 2018, Ventana now lets you choose from two available in-coach Wi-Fi solutions.

### **A quality look**

Lagoon full-paint  
Masterpiece™ finish

### **Worry no more**

Available power-locking baggage  
doors with auto-lock feature

# YOUR NEEDS AND WANTS

Versatility is a Ventana hallmark, which is why most floor plans include a Hide-a-Bed sofa, while many now offer a couch that turns into bunk beds with ease. The 2018 Ventana even comes decorated by a carved wood slideout fascia with accent lighting. Up above, Feature Ceiling eliminates exposed vents without disrupting airflow.

#### The right mix

Floor plan 4308 with Lagoon décor

#### Stellar support

6-way power adjustable captain's chairs



Lagoon Décor with Bermuda Glazed Maple Cabinetry | Floor Plan 4308



## LEADING-EDGE COMFORT

Select 2018 Ventana floor plans house extras like a plush recliner and 48" Sony® retractable LED TV, with superior picture and sound delivered courtesy of an optional Blu-ray player. Dinette choices include both Comfort Booth and combination desk/dinette arrangements, each providing a conveniently placed USB outlet.

### **Full of detail**

Polished porcelain tile flooring with linear inserts

### **Stores easily**

Available Hide-a-Leaf dinette and chairs



# FEEL EVEN MORE AT HOME

Choose floor plan 4308 and enjoy a residential-style angled kitchen that houses an available 19.7 Cf. Whirlpool® refrigerator along with three separate storage pantries. Every 2018 Ventana serves you with a convection microwave, a double-bowl stainless steel sink with chef's faucet and a recessed gas cooktop.

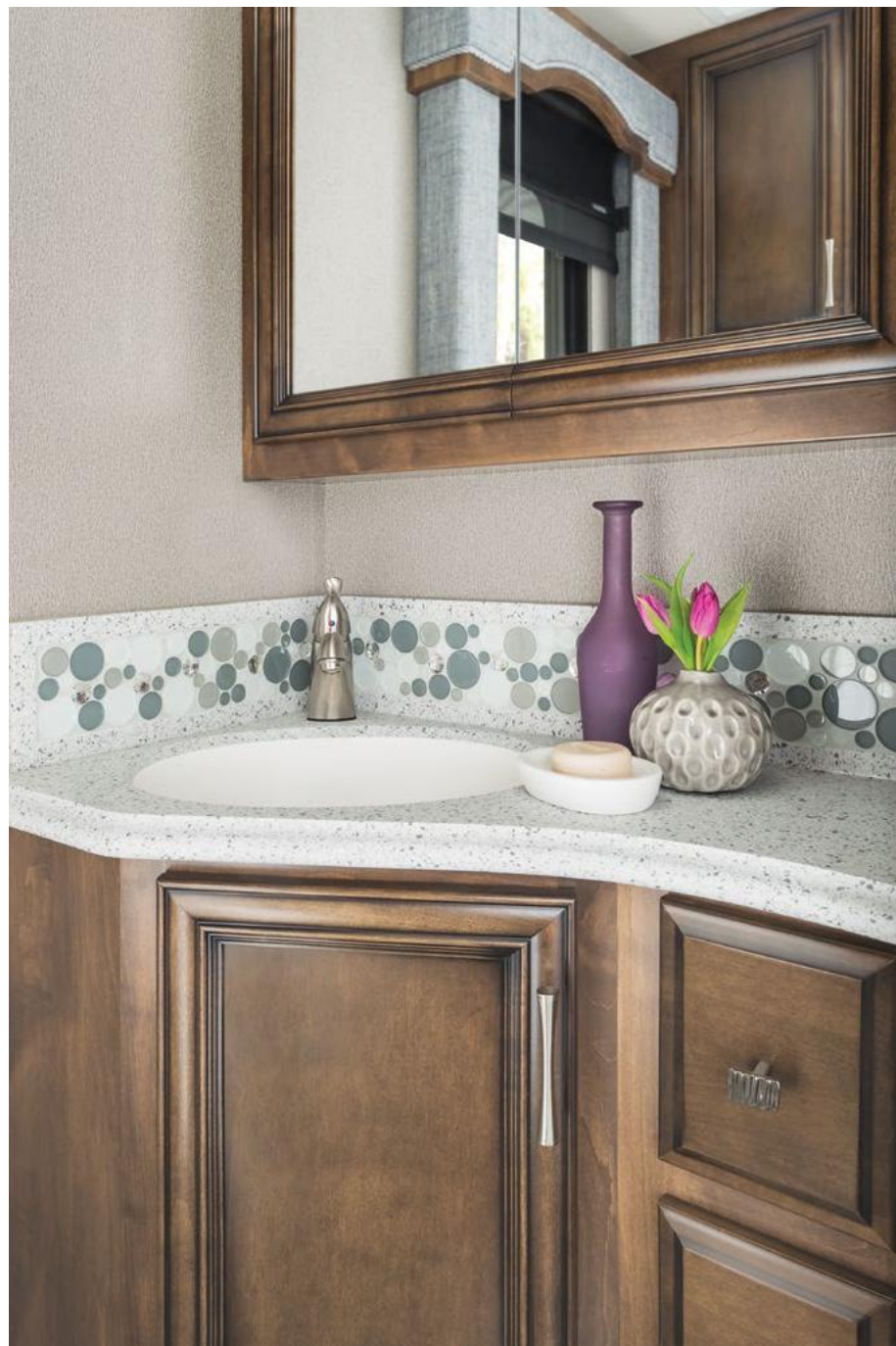
#### Style & storage

Bermuda glazed maple cabinetry

#### Scrub no more

Dishwasher now available on select floor plans





## NOW YOU CAN HAVE IT ALL

Select Ventana master suites come with a mirrored rear-wall wardrobe that can accommodate an available Whirlpool® stacked washer and dryer. Deluxe window treatments and a polished solid-surface sink top add just the right amount of residential elegance, while an available king bed delivers extra room to relax.

**Made for life**  
Mid-ship master bath vanity

**Dream big**  
Available king bed with pillow  
top mattress





## PRACTICAL INNOVATION

Floor plan 4308 grants you a unique bedroom vanity fitted with a large medicine cabinet alongside six hardwood drawers topped with solid surfaces. In the master bath, a new shower system lets you conserve fresh water.

### **Ready to entertain**

Sony® LED TV with DVD player  
(Blu-ray optional)

### **Easy living**

40" x 32" shower with  
maintenance-free walls





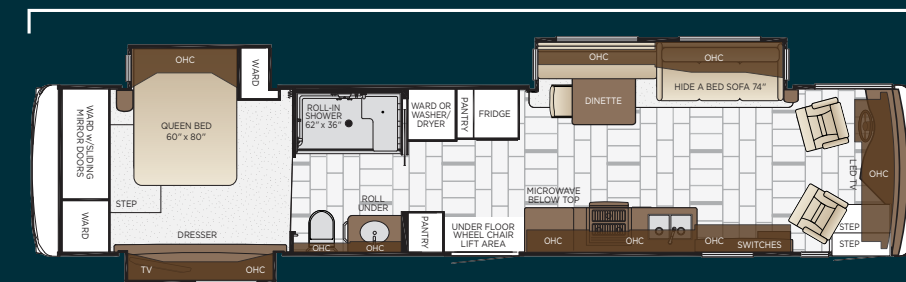


2015 Chateaux décor shown

# MOBILITY WITHOUT EXCEPTION

Accessible from front to back, Ventana 4311 features a power BraunAbility® lift that stores underneath the floor to maximize cabin space, a 62" x 36" roll-in shower, power-adjustable dinette, lowered switches and appliances plus much more.

Length: 43' 10"



## 4311

Length	43'10"	Grey Tank	65 gal.
Width	101.5"	Sewage Tank	45 gal.
App. Overall Height	12'11"	Water Tank	105 gal.
Interior Width	95.5"	Propane Tank	32 gal.
Interior Height	83"	Furnace	50,000 btu





## EXPERIENCE TOTAL CONTROL

Supported by a Freightliner® XCR chassis backed by the Newmar STAR Foundation, 40' to 43' Ventana models add a tag axle, Passive Steer technology and a 400-horsepower Cummins® diesel engine. To make each journey even more enjoyable, Ventana is equipped with Comfort Drive™ steering, JBL® cockpit audio, and an available six-inch monitor with Rand McNally® navigation.

**Ample cover**

Standard side and rearview cameras

**Sony quality**

Available Sony® exterior entertainment center

# EXTERIOR & INTERIOR DÉCOR



**FIELDSTONE EXTERIOR**

*Awning Color: Charcoal Tweed*



**FIELDSTONE INTERIOR**

*a. Furniture/Fabric b. Carpet c. Flooring d. Counter Top*



**LAGOON INTERIOR**

*a. Furniture/Fabric b. Carpet c. Flooring d. Counter Top*



**MUSLIN INTERIOR**

*a. Furniture/Fabric b. Carpet c. Flooring d. Counter Top*



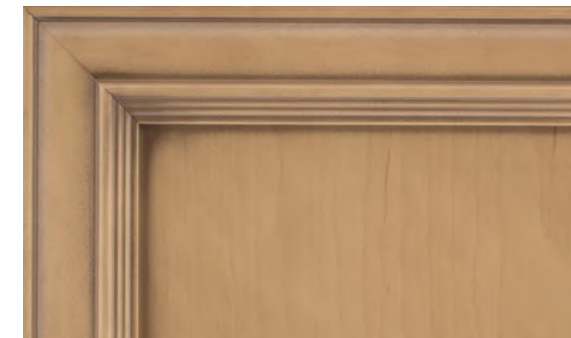
**LAGOON EXTERIOR**

*Awning Color: Charcoal Tweed*



**MUSLIN EXTERIOR**

*Awning Color: Linen Tweed*



**WICKER GLAZED MAPLE**

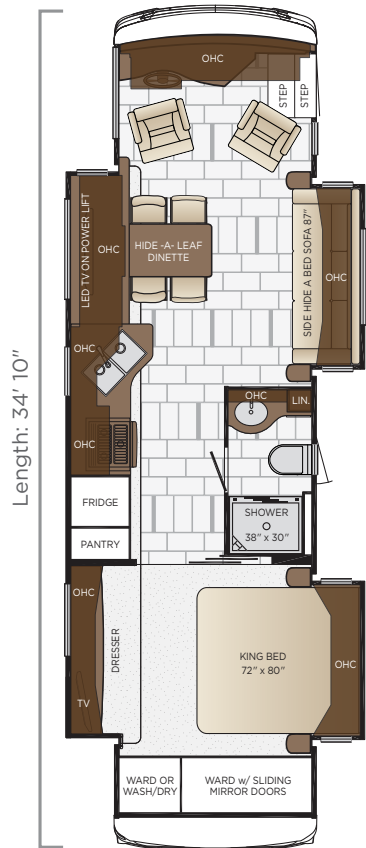


**CARMEL GLAZED CHERRY**



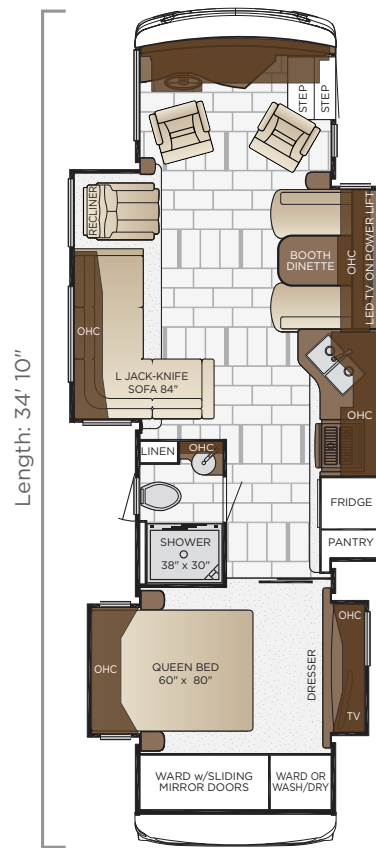
**BERMUDA GLAZED MAPLE**

# VENTANA



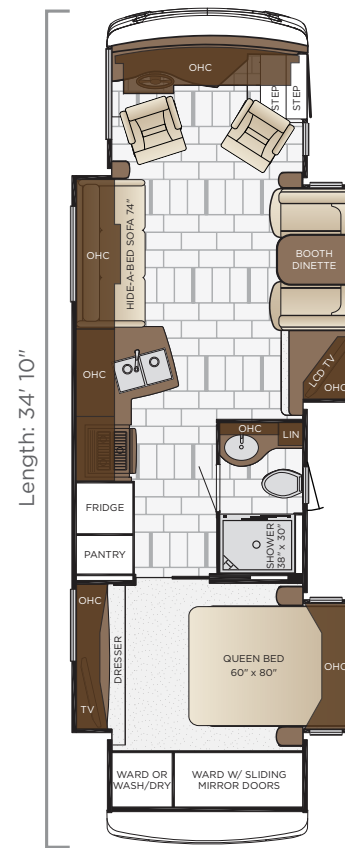
**3407**

Length	34'10"
Width	101.5"
App. Overall Height	12'10"
Interior Width	95.5"
Interior Height	83"
Grey Tank	65 gal.
Sewage Tank	45 gal.
Water Tank	105 gal.
Propane Tank	32 gal.
Furnace	35,000 btu



**3412**

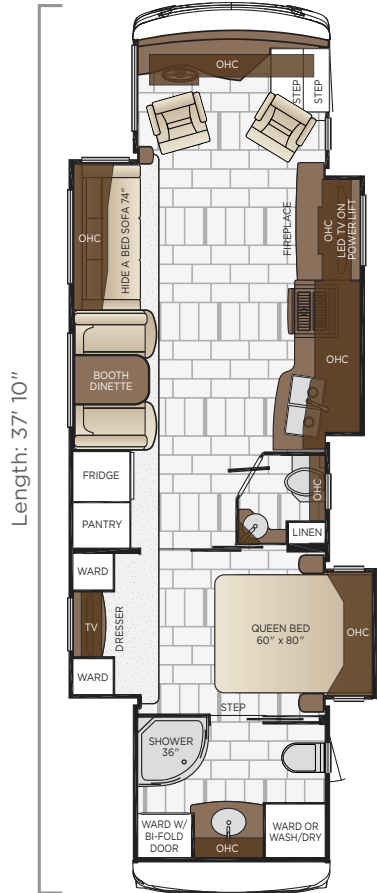
Length	34'10"
Width	101.5"
App. Overall Height	12'10"
Interior Width	95.5"
Interior Height	83"
Grey Tank	65 gal.
Sewage Tank	45 gal.
Water Tank	105 gal.
Propane Tank	32 gal.
Furnace	35,000 btu



**3436**

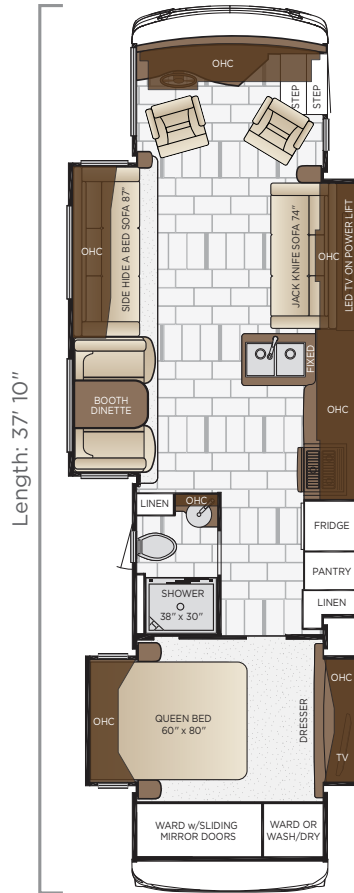
Length	34'10"
Width	101.5"
App. Overall Height	12'10"
Interior Width	95.5"
Interior Height	83"
Grey Tank	65 gal.
Sewage Tank	45 gal.
Water Tank	105 gal.
Propane Tank	32 gal.
Furnace	35,000 btu

# FLOOR PLANS



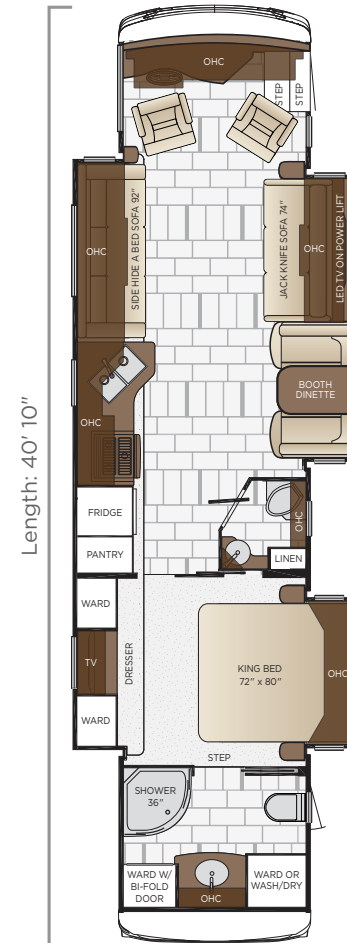
## 3709

Length	37'10"
Width	101.5"
App. Overall Height	12'10"
Interior Width	95.5"
Interior Height	83"
Grey Tank	65 gal.
Sewage Tank	45 gal.
Water Tank	105 gal.
Propane Tank	32 gal.
Furnace	54,000 btu



## 3715

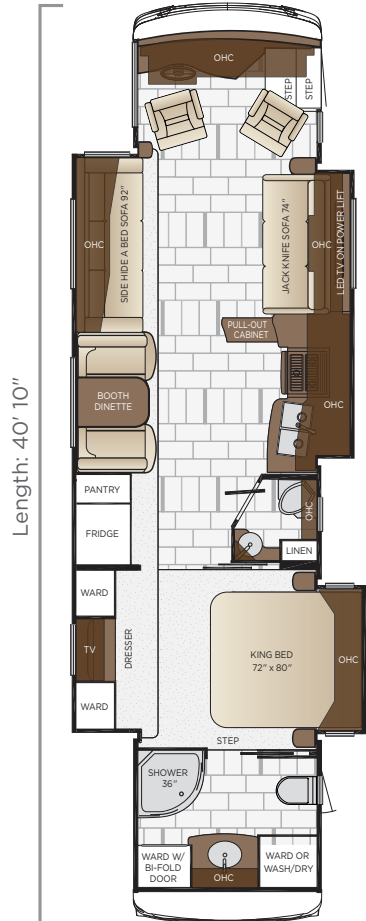
Length	37'10"
Width	101.5"
App. Overall Height	12'10"
Interior Width	95.5"
Interior Height	83"
Grey Tank	65 gal.
Sewage Tank	45 gal.
Water Tank	105 gal.
Propane Tank	32 gal.
Furnace	54,000 btu



## 4002

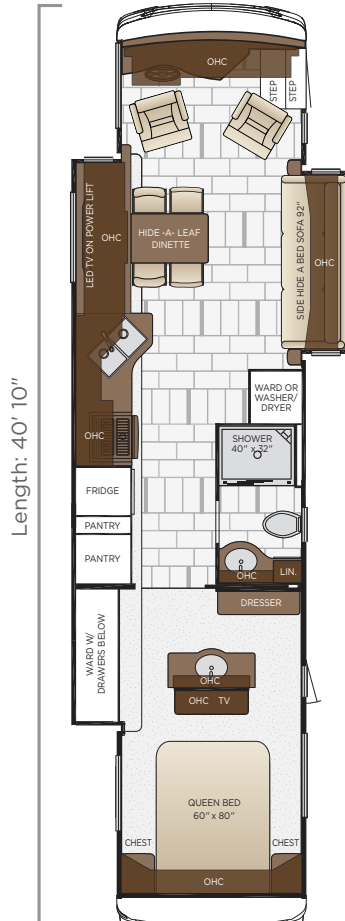
Length	40'10"
Width	101.5"
App. Overall Height	12'11"
Interior Width	95.5"
Interior Height	83"
Grey Tank	65 gal.
Sewage Tank	45 gal.
Water Tank	105 gal.
Propane Tank	32 gal.
Furnace	54,000 btu

# VENTANA



## 4037

Length	40'10"
Width	101.5"
App. Overall Height	12'11"
Interior Width	95.5"
Interior Height	83"
Grey Tank	65 gal.
Sewage Tank	45 gal.
Water Tank	105 gal.
Propane Tank	32 gal.
Furnace	54,000 btu



## 4046

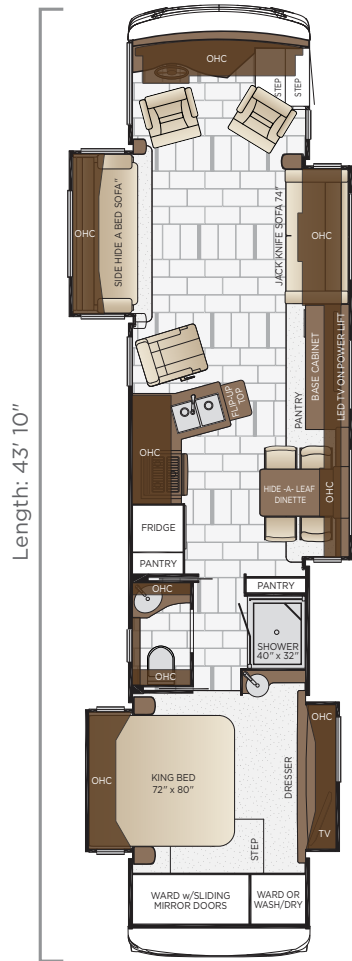
Length	40'10"
Width	101.5"
App. Overall Height	12'11"
Interior Width	95.5"
Interior Height	83"
Grey Tank	65 gal.
Sewage Tank	45 gal.
Water Tank	105 gal.
Propane Tank	32 gal.
Furnace	54,000 btu



## 4049

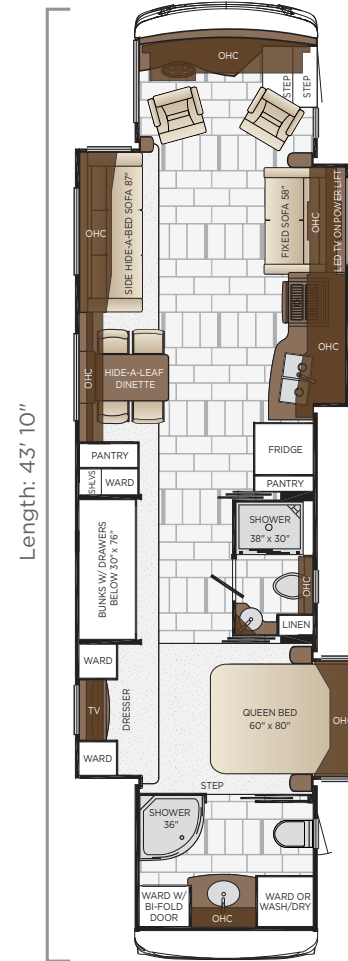
Length	40'10"
Width	101.5"
App. Overall Height	12'11"
Interior Width	95.5"
Interior Height	83"
Grey Tank	65 gal.
Sewage Tank	45 gal.
Water Tank	105 gal.
Propane Tank	32 gal.
Furnace	54,000 btu

# FLOOR PLANS



## 4308

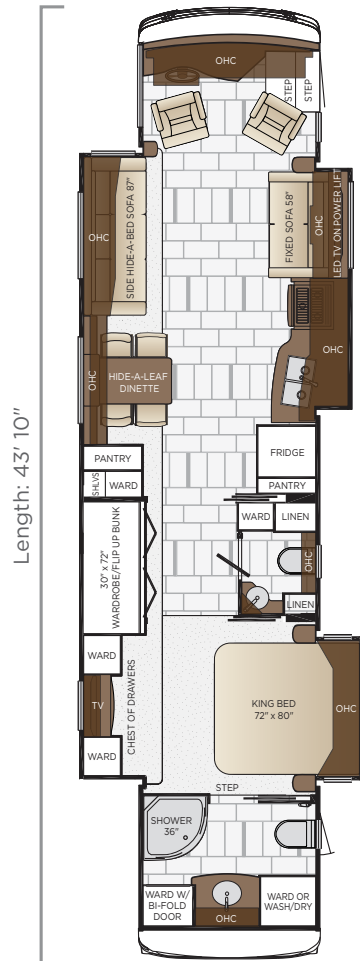
Length	43'10"
Width	101.5"
App. Overall Height	12'11"
Interior Width	95.5"
Interior Height	83"
Grey Tank	65 gal.
Sewage Tank	45 gal.
Water Tank	105 gal.
Propane Tank	32 gal.
Furnace	50,000 btu



## 4310

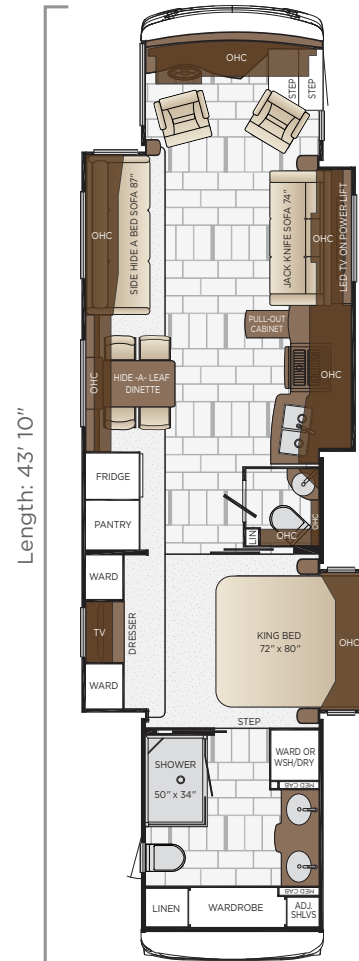
Length	43'10"
Width	101.5"
App. Overall Height	12'11"
Interior Width	95.5"
Interior Height	83"
Grey Tank	65 gal.
Sewage Tank	45 gal.
Water Tank	105 gal.
Propane Tank	32 gal.
Furnace	85,000 btu

# FLOOR PLANS



## 4326

Length	43'10"
Width	101.5"
App. Overall Height	12'11"
Interior Width	95.5"
Interior Height	83"
Grey Tank	65 gal.
Sewage Tank	45 gal.
Water Tank	105 gal.
Propane Tank	32 gal.
Furnace	50,000 btu



## 4369

Length	43'10"
Width	101.5"
App. Overall Height	12'11"
Interior Width	95.5"
Interior Height	83"
Grey Tank	65 gal.
Sewage Tank	45 gal.
Water Tank	105 gal.
Propane Tank	32 gal.
Furnace	50,000 btu





# QUALITY YOU CAN FEEL

Like a fine home, the 2018 Ventana is framed 16 inches on center, and is covered by a fiberglass roof with walkable decking and an integrated gutter rail.

FLOOR PLAN	ENGINE HP	AXLE RATIO	FUEL CAP.	WHEEL BASE	FRONT GAWR	REAR GAWR	TAG GAWR	GVWR	GCWR	APP. UVW	APP. NCC
3407	360	4.78	100 gal.	206	12400 lb.	23000 lb.	n/a	35400 lb.	45400 lb.	27800 lb.	7600 lb.
3412	360	4.78	100 gal.	206	12400 lb.	23000 lb.	n/a	35400 lb.	45400 lb.	27800 lb.	7600 lb.
3436	360	4.78	100 gal.	206	12400 lb.	23000 lb.	n/a	35400 lb.	45400 lb.	27900 lb.	7500 lb.
3709	360	4.78	100 gal.	242	13300 lb.	24000 lb.	n/a	37300 lb.	47300 lb.	29900 lb.	7400 lb.
3715	360	4.78	100 gal.	242	13300 lb.	24000 lb.	n/a	37300 lb.	47300 lb.	29000 lb.	8300 lb.
4002	400	4.78	100 gal.	245+TAG	14000 lb.	20000 lb.	10000	44000 lb.	59000 lb.	33600 lb.	10400 lb.
4037	400	4.78	100 gal.	245+TAG	14000 lb.	20000 lb.	10000	44000 lb.	59000 lb.	33900 lb.	10100 lb.
4046	400	4.78	100 gal.	245+TAG	14000 lb.	20000 lb.	10000	44000 lb.	59000 lb.	33800 lb.	10200 lb.
4049	400	4.78	100 gal.	245+TAG	14000 lb.	20000 lb.	10000	44000 lb.	59000 lb.	33800 lb.	10200 lb.
4308	400	4.78	100 gal.	281+TAG	14700 lb.	20000 lb.	10000	44700 lb.	59700 lb.	35500 lb.	9200 lb.
4310	400	4.78	100 gal.	281+TAG	14700 lb.	20000 lb.	10000	44700 lb.	59700 lb.	35500 lb.	9200 lb.
4311	400	4.78	100 gal.	281+TAG	14700 lb.	20000 lb.	10000	44700 lb.	59700 lb.	33700 lb.	11000 lb.
4326	400	4.78	100 gal.	281+TAG	14700 lb.	20000 lb.	10000	44700 lb.	59700 lb.	34300 lb.	10400 lb.
4369	400	4.78	100 gal.	281+TAG	14700 lb.	20000 lb.	10000	44700 lb.	59700 lb.	35100 lb.	9600 lb.

The content in our literature depicts and describes products that are subject to change. For the most recent images and information, please visit [NewmarCorp.com](http://NewmarCorp.com).

Lengths, heights, widths and dry weights are approximate. Weight will vary based on optional equipment added to the above base weight.

**GAWR:** Gross Axle Weight Rating is the maximum permissible weight for an axle.

**GVWR:** Gross Vehicle Weight Rating is the maximum permissible weight for a fully loaded motor coach.

**GCWR:** Gross Combination Weight Rating is the value specified by the manufacturer of the vehicle as the maximum allowable loaded weight of this motor coach and any towed trailer or towed vehicle.

**UVW:** Unloaded Vehicle Weight is the weight of this motor coach as built at the factory with full fuel, engine oil and coolants. Does not include cargo, fresh water, propane gas or dealer-installed accessories.

**NCC:** Net Carrying Capacity is the maximum weight of all occupants, including the driver, personal belongings, food, fresh water, waste water, propane gas, tools, tongue weight of towed vehicle, dealer-installed accessories, etc., that can be carried by the motor coach.

#### Specifications supplied by the chassis manufacturer.

#### Ventana R-Values:

- Roof R-Value = 19
- Sidewall R-Value = 11
- Floor R-Value = 16
- Basement R-Value = 4

# FEATURES & OPTIONS



# EXTERIOR

## EXTERIOR FEATURES

Full-Paint Masterpiece Finish™ with Diamond Shield Protection on Front Cap

Convex Exterior Mirrors with Remote Control, Defrost and Turn Signals

Entrance Door with Automatic Step

Rear Hitch for Towing Car

Assist Handle at Entrance Door

Mud Flaps

Rear Protective Tow Guard with Stainless Steel Newmar Letters

Rear Ladder

Undercoating

Wheelchair Lift on 4311 Floor Plan

Hydraulic Leveling Jacks

Stainless Steel Exterior Trim Pieces on Front Cap and Grille Area

Hammock Backer

## OPTIONS

Patio Hammock Package

Chrome Exterior Mirrors

Large Storage Tray with Access from One Side or Either Side

Pass Through Storage Tray with Access from Either Side

Chrome Power Baggage Door Locks, Keyless Entrance Door with Touch Pad & Door Bell

Painted Power Baggage Door Locks, Keyless Entrance Door with Touch Pad & Door Bell

Temporary Windshield Protection for Transport

Flag Pole Bracket

## CONSTRUCTION FEATURES

BriteTEK™ Roof with Walkable Deck

Gelcoated Fiberglass Exterior Sidewalls, Front and Rear Caps

Aluminum-Frame Sidewalls & Roof Construction, 16" on Center

5/8" Foam Insulation Laminated in Sidewalls & Ceiling

## OPTIONS

One Piece Molded Fiberglass Roof

Mechanical Lock Arms on Slideout Rooms

Polar Pak R19 Batten Insulation in Roof

## WINDOWS, AWNINGS & VENTS

Frameless Double-Pane Tinted Safety-Glass Windows
Fan-Tastic® Vent with Rain Sensor in Kitchen and Bathroom
Skylight Above Shower
Carefree Traveler Power Side and Entrance Door Awning with Alumaguard
Slideout Awning Covers
One Piece Tinted Windshield
Egress Door with Ladder System
<b>OPTIONS</b>
Carefree Window Awning
Kitchen Window
Bunk Windows

## CHASSIS FEATURES

Freightliner® Passive Steer Tag Axle XCR Chassis with 400Hp Cummins L Engine on 40'-43' Floor Plans
Freightliner® XCR Chassis with 360Hp Cummins B Engine on 34'-37' Floor Plans
Aluminum Wheels
Cruise Control
Comfort Drive™ Steering With Adjustable Control
Manual Tilt and Telescope Steering Column
Recessed Fuel Fills with Crossover to Fill from Either Side
Back-Up Alarm
Anti-Lock Braking System
Chassis Battery Disconnect

## AIR CONDITIONING & HEATING

Two 13.5M Penguin™ Heat Pump Air Conditioners
Propane Gas Furnace with Ducted Heat on 34'-40' Floor Plans
Hydronic Zone Heating System with Continuous Hot Water on 43' Floor Plans
Dash Heater and Air Conditioner
Driver & Passenger Dash Overhead Ventilation System
Wall Mounted Sensors for Heating and Air Conditioning
<b>OPTIONS</b>
Two 15M Penguin Heat Pump Air Conditioners
Hydronic Zone Diesel Heat with Continuous Hot Water
3-15M Penguin Heat Pump Air Conditioner and Energy Management System*

## ELECTRICAL FEATURES

8.0 kW Cummins Onan® Diesel Quiet Series Generator
50 Amp Electrical Service with Flexible Cord with Automatic Transfer Switch
Four 6-Volt House Batteries on Pullout Tray
Battery Disconnect Switch for House Battery
10 Watt Solar Panel to Charge Chassis Battery
2000 Watt Modified Sine Inverter
12 Volt Auxiliary Receptacle on Dashboard
Emergency Engine Start Switch
Engine Block Heater
Exterior Security Light on Doorside
Midship Side Turn Signals
LED Lights Recessed in Ceiling and Underneath Overhead Cabinets
Accent Lights in Slideout Fascia Trim
Manually Operated Hold-To-Run Slideout Switch
Cable TV Connection
Interior Courtesy Lights
Lights in Exterior Storage Compartments
USB Charger at Dinette & Bedroom Night Stand
Wireless Charging Mat Built into Dash
Dual USB Charger at Dash*
USB Outlet at Head of Each Bunk Area*
Spare Fuses in Chassis and House Fuse Panels
<b>OPTIONS</b>
Energy Management System
Power Rewind Reel with 50' Cord
Power Rewind Reel with 34' Cord
Automatic Generator Start on Low Battery or Temperature Setting
Solar Prep with Six Gauge Wire Run from the Roof to the House Battery Compartment
Four Global Solar Flexible 100 Watt Solar Panels on Roof

## PLUMBING & BATH FEATURES

Demand Water System
Sewage Holding-Tank Rinse
Water Heater Bypass System
Dometic® 321 China Bowl Stool or Macerator Stool*
Systems Panel
Sentrel Shower Walls with Glass Door*
Water Filter for Entire Unit
Exterior Shower
Auto Fill with Top Off Feature
<b>OPTIONS</b>
Power Water Hose Reel
Hot Water Line to Generator Area*

## INTERIOR FEATURES

Designer Feature Ceiling
Polished Porcelain Tile Floor in Kitchen, Bathroom and Living Area
Carpeting in Bedroom and on Slideout Floors
MCD Window Shades
MCD Power Shades at Windshield and Manual Shades on Driver/Passenger Side Windows
Dash Panel Color Coordinated ABS
Decorative Wall Art
Inlaid Six Panel Design Interior Passage Doors
Interior Assist Handle at Main Entry Door
Power Stepwell Cover
Quilted Bedspread with Accent Pillow
Removable Transport Pads for Under Slideout Rollers
10 Bc Fire Extinguisher, Smoke Detectors, Propane and Carbon Monoxide Detector
Waste Basket in Kitchen Base
<b>OPTIONS</b>
Floor Tile Extended into Bedroom Area
Safe Located in Bedroom Wardrobe
MCD Power Window Shades with Remote Control on 4311



## APPLIANCES

Convection Microwave with Three Burner Recessed Gas Cooktop

Air Horns

Norcold® 10 Cf. Refrigerator with Brushed Aluminum Refrigerator Front

10 gal. Gas/Electric Water Heater with Direct-Spark Ignition on 34'-40' Floor Plans

Prep for Two-Piece Washer/Dryer

Flush Gas Cooktop Cover of Matching Countertop Material

Fireplace in Living Area\*

### OPTIONS

30" Convection Microwave in Kitchen Overhead with a Drawer Below Cooktop on 4311

Norcold® 12 Cf. Four-Door Refrigerator with Icemaker

Norcold® 12 Cf. Four-Door Refrigerator with Icemaker and Heated Water Line

Frigidaire 10 Cf. Refrigerator with 2000 Watt Pure Sine Inverter and Two Extra Batteries and 22 gal. Propane Tank

Whirlpool® 19.7 Refrigerator with 2000 Watt Pure Sine Inverter and Two Extra Batteries and 22 gal. Propane Tank

Whirlpool® Two-Piece Stacked Washer/Dryer

All Electric, Flush Mount Induction Cooktop, Whirlpool 19.7 Refrigerator, 4 Extra Batteries, 2800 Inverter, Hydronic Heat

Central Vacuum with Tool Kit

110 Volt Heat Pads for Holding Tanks (not on 43-ft models)

Dishwasher in a Drawer with Stainless Steel Front

## CABINETS & FURNITURE

Bermuda Glazed Maple Cabinets with Mitered Designer Doors

Concealed Hinges on Cabinet Doors

Polished Solid Surface Countertop in Kitchen with Under Mounted Stainless Steel Sink and Sink Covers

Dinette with Power Adjusted Table, Bench Seat and Folding Chair on Wheelchair Accessible Floor Plan\*

Lifts on Bed Top

Passenger Seat Work Station

Solid Surface Countertop in Bathroom and Bedroom

Adjustable Pullout Pantry Shelves\*

Drawers with Full Extension Guides

Flexsteel® Ultrafabric Sofa and Driver/Passenger Seats

Driver/Passenger Seats with Six-Way Power, Power Lumbar and Footrest

Plush Pillow Top Mattress

Extended Rotation Concealed Hinge for Washer/Dryer Cabinet Door

### OPTIONS

Carmel Glazed Cherry Cabinets with Mitered Designer Doors

Wicker Glazed Maple Cabinets with Mitered Designer Doors

Queen Bed

King Bed

Comfort Booth Dinette

Dinette with Roll Away Table, Fixed/Two Folding Chairs

Buffet Dinette, Fixed/Two Folding Chairs

Buffet Dinette with Free Standing Table

Sleep Number Premier Radius Corner Air Mattress

Combination Desk with Buffet Table, Two Fixed/Two Folding Chairs

Combination Desk/Dinette with Free Standing Hidden Leaf Table, Two Fixed/Two Folding Chairs

Combination Desk with Buffet Dinette, Two Fixed/Two Folding Chairs

Combination Desk/Dinette with Roll Away Table, Two Fixed/Two Folding Chairs

Door Side Fold & Tumble Sofa with Air Mattress, Off Door Side Swivel Wall Hugger Recliner, Fireplace, and Televator TV

Door Side Fold & Tumble Sofa with Air Mattress, Off Door Side Two Swivel Wall Hugger Recliners with End Table

Off Door Side 87" Power Extenda L Jack Knife Sofa

Off Door Side 92" Power Extenda L Hide-A-Bed Sofa with Air Mattress

Off Door Side Hide-A-Bed with Air Mattress

87" Bunk Sofa\*

87" Bunk Sofa with End Table\*

Power Flip Up Sofa in Bed Base with Sleep Number® Premier Air Mattress

Power Incline Head of Bed with Sleep Number Premier Air Mattress

Power Incline Retracting Bed Base with Sleep Number Premier Air Mattress

Flexsteel® Euro Booth Dinette with 1-6" Table Leaf

Bunk Beds to Convert to Wardrobe

Door Side Fold & Tumble with Air Mattress, Off Door Side Bunk Sofa

Door Side Hide-A-Bed, off Door Side Bunk Sofa

Euro Booth with Extra Leaves, Removable Table Legs & 2 Folding Chairs



## AUDIO, VIDEO & ACCESSORIES

Sony® LED TV and DVD Player in Living and Bedroom Areas\* (TV Sizes Vary Per Floor Plan)

Sony 48" LED TV on Televator in Living Area\*

Dash Radio/CD Player with Harman/JBL 180 Watt Sound System and Subwoofer

Bose Solo 5 Sound Bar Sound System

Bluetooth Microphone for Sony Dash Radio

Rearview Color Monitor System with Audio

Side View Cameras Displayed onto Rearview Monitor Screen

Winegard Digital TV Antenna

Satellite Dish Prep on Roof

Two Bedroom Radio Speakers

TV Jack and 110 Volt Recept in Door Side Exterior Storage Compartment

High Definition Component Wiring

### OPTIONS

Sirius Satellite Radio Capability (Does not include monthly subscription)

Sony® 40" LED TV in Front Overhead

Sony® 48" Televator TV with Fireplace on 3911 & 4311 Floor Plans

Exterior Entertainment Center in Sidewall with Sony® 40" LED TV and Soundbar

Exterior Entertainment Center in Storage Compartment with Sony® 32" LED TV and Soundbar

Winegard Automatic Dome Satellite

Winegard In Motion Dome Satellite

Winegard Automatic Open Face Satellite

Winegard In Motion Satellite

Winegard Automatic Open Face SWM Satellite

Winegard Rayzar Automatic Digital TV Antenna

Blu-ray Disc Players

Wifi Ranger Skypro Pack Router

Universal Remote Control

Xite Dash Radio, 6" Monitor with Rand McNally Navigation

Two-11" LCD Flip Down Monitor/DVD Player with Headphone\*

\*Check with dealership on floor plan availability.

The content in our literature depicts and describes products that are subject to change. For the most recent images and information, please visit [NewmarCorp.com](http://NewmarCorp.com).

# THE NEWMAR CUSTOMER EXPERIENCE

The Newmar Difference goes beyond our industry-leading motor coaches to deliver you with an unrivaled ownership experience.



## QUALITY FROM THE START

Every Newmar is crafted one at a time by folks who have spent an average of eight years building them. And each coach we assemble must undergo more than 1,000 quality checks before ever leaving the Newmar factory.



## EVERYTHING IN ONE PLACE

As a Newmar owner, you'll find resources specific to your coach through **Newgle**, an easy-to-use knowledge base that houses everything from user guides to technical support documents.



## FRIENDS FOR LIFE

Join Newmar and meet fellow owners through the **Newmar Kountry Klub**, a top social club for RV travelers. Or, connect using the world's only social sharing network created for RVers, by RVers — **RoadLens.io**.



## SEAMLESS SERVICE

Available 24/7, our service specialists guarantee dealer repair authorization within four hours, and all in-stock parts ship the same day, free of charge. If a part is out of stock, we'll pull it from our production floor or order the part from the appropriate vendor right away.



## ROCK-SOLID WARRANTY COVERAGE

All models include a 1-year/unlimited mileage limited warranty and a 5-year, non-transferable structural warranty that covers your vehicle's superstructure in the event it fails to perform. Ask your Newmar dealer for details.



## A. ROOF

---

BriteTEK™ Roof with Walkable Deck

Batten Insulation

A/C Ducting

16" on Center Aluminum Rafter Framing

Kraft Paper Vapor Barrier

5/8" Bead Foam

3/16" Panel

Padded Vinyl Overlay

## B. SIDEWALL

---

Interior Wall Panel

5/8" Bead Foam

Kraft Paper Vapor Barrier

Batten Insulation

Composite One-Piece Gelcoat Exterior Wall

Aluminum Framing

## C. FLOOR

---

Carpet/Tile

Carpet Padding

5/8" Floor Decking

Batten Insulation

16" on Center Wood Framing

Polyethylene Moisture Barrier

## D. EXTERIOR

---

13.5 M Penguin™ Heat Pump

Central Air Conditioner

One-Piece Bonded Windshield

Coated Aluminum Wheels

Frameless, Double-Pane, Tinted Safety-Glass Windows

Side-Hinged Baggage Doors with Optional Pull-Out Tray

# OUR PARTNERS

*Newmar Quality Begins With The Company We Keep*

Newmar only works with suppliers dedicated to providing our customers with unrivaled quality, comfort and convenience. Best-in-class performance from names you can trust. At Newmar, that's our difference, and our promise.

## **BASF**

The Coatings division of BASF is a global expert in the development and production of innovative and sustainable OEM and refinish coatings. Coatings by BASF – solutions beyond your imagination.

## **Flexsteel**

Flexsteel Recreation offers innovative furniture designed for a life that rarely sits still. Comfortable and space-saving, Flexsteel furniture ensures your RV is always ready for dining, sleeping or hosting guests.

## **Freightliner Custom Chassis**

Freightliner Custom Chassis are renowned for their exceptional ride, excellent maneuverability, advanced chassis technology, and nationwide 24/7 factory-direct support.

## **Industrial Finishes**

Industrial Finishes has supported RV manufacturers for over four decades. The Industrial Finishes paint process delivers uncompromising quality, providing your coach with a true Masterpiece™ finish.

## **Sony**

Beautifully designed Sony TVs & Blu-ray players deliver an immersive picture and true-to-life sound. Revolutionize every aspect of your home entertainment experience with Sony.

## **Spartan Motors**

An American company with over 30 years of experience designing and manufacturing the premier motorhome chassis, which deliver superior performance, exceptional safety ratings, and industry-leading technology.







## THE NEWMAR LEGACY

*50 years, built one by one.*

Driven to engineer and build the highest-quality RVs the world had ever seen, Marvin Miller and Marvin Newcomer founded Newmar Corporation in 1968.

The pair set up shop in the small Midwest woodworking town of Nappanee, Indiana, where they discovered the people who would establish Newmar as a leading RV manufacturer over the next half century. Artisans and engineers, product designers and quality-control experts to whom being the best is more important than being the biggest.

As we move toward 100 years as a company, our products will continue to evolve. But one thing that will never change is our commitment to hand-crafting excellence, one coach at a time.



# ENTANA



NEWMAR CORPORATION | 355 N DELAWARE ST | PO BOX 30 | NAPPANEE, IN 46550-0030 | 574-773-7791 | FAX 574-773-2895

[www.newmarcorp.com](http://www.newmarcorp.com)

**LaMESA REC  
VAN**  
LaMesaRV.com  
800-496-8778